

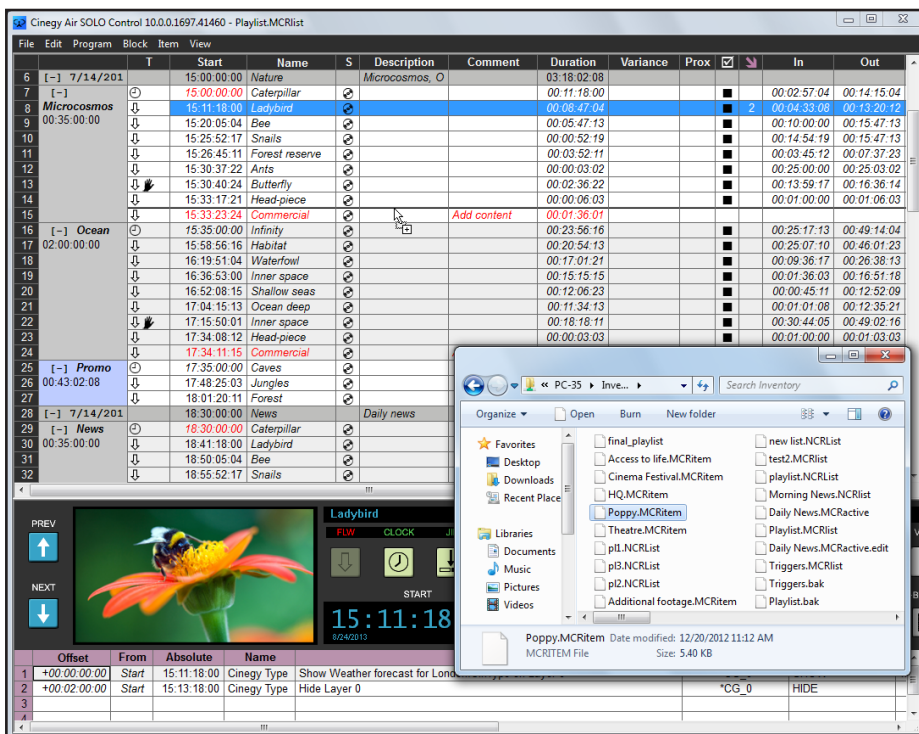
Cinegy Air SOLO

real-time playout server and broadcast automation software



Cinegy Air SOLO is the new entry-level version of the successful Cinegy playout products that is used by hundreds of TV channels around the globe. It has more features and capabilities than most other vendor's solutions, which are also many times more expensive. Affordability is not just limited to the price of the software. Operating and maintaining Cinegy Air SOLO is considerably easier and less expensive than other existing solutions.

Cinegy Air SOLO provides a broadcast automation and control front-end and a real-time video server for SD, HD and/or Ultra HD (4K) playout in an integrated software suite. Designed to meet the most demanding requirements Cinegy Air SOLO effortlessly succeeds where so many others fail. Cinegy Air SOLO can be used to control playout to air or to plan schedules, program and commercial blocks offline. Offering unparalleled flexibility by playing mixed format and mixed resolution content, inserting logos, adding overlays and controlling external devices. Cinegy Air SOLO supports simulcast output via SDI and/or IP streams for ATSC/DVB or web usage.



Building a playlist in Cinegy Air SOLO

Cinegy Air SOLO – Control and Engine

Cinegy Air SOLO is software-based and runs on certified standard IT hardware and certified, standard SDI video cards. As a result, a complete HD channel can fit into a single rack unit with the potential for even higher integration using virtualization.

Playout as a Service

Cinegy Air SOLO performs video playout by acting as a TCP/IP-connected video “printer” offering its services in a network. The Cinegy Air SOLO broadcast automation software connects to the playout engine and instructs it what to “print” to air and when. Cinegy Air SOLO consists of two elements, Cinegy Air SOLO Control and Cinegy Air SOLO Engine. Cinegy Air SOLO Control provides a state-of-the-art interface for controlling a Cinegy Air SOLO service playout channel connected via TCP/IP.

Cinegy Air SOLO Engine executes the playlist provided to it and renders video and audio to air. It also sends real-time video stream feedback to the Cinegy Air SOLO Control interface, eliminating the need for video control monitors as well as SDI cabling and routing. In small environments, Cinegy Air SOLO Control and Cinegy Air SOLO Engine can run on one PC – basically a “TV channel in a box”.

Cinegy Air PRO	Cinegy Air SOLO	Cinegy Playout Series Feature Matrix
X	X	Web Streaming
X	X	MPEG-2 TS RTP/UDP
X		Compliance Recording
X		Secondary Recording
X		Simulcast SD/HD
X		Simulcast 4x3/16x9
X	X	SD SDI Out
X	X	HD SDI Out
X	X	Logo Insertion
X	X	CC & Channel Branding*
X		High-Availability (Mirror)
X	X	Multi-Channel Control
X	X	Live Input
X	X	AVC-Intra
X	X	AVID DNxHD*
X	X	MXF AS02/AS03
X		Remote Operation
X	X	Automation
X		Live & News Control
X		Prefetch Caching
X		MAM Integration
X		MOS Integration
X	X	Virtualization
X	X	Slow-Motion Playback
X	X	RS-422 Control
X		Play while Ingest

*available as a paid option

Cinegy Air SOLO

real-time playout server and broadcast automation software



Simple Operation

The Cinegy Air SOLO Control user interface is easy to use. Next to the traditional playout schedule list it also provides a horizontal timeline view. Items can be added by drag & drop. An item for example, could be a video file of any video format supported, which is almost all. Items in the list can be previewed, trimmed, and cut - all using the Cinegy Air SOLO Control user interface built-in player/editor tool. In the playout schedule items can be grouped into three different hierarchy levels which can be collapsed and expanded to improve readability.

All the functions required for modern playout automation are available with Cinegy Air SOLO, including placeholder items, secondary events, manual end, clocked and joined-in progress triggers as well as loop playback of items and blocks of items.

Cinegy Air SOLO Control can be installed on any machine in a network and playlists can be created in online or offline mode. Prepared blocks and playlists can be saved to file and then appended or inserted to the live playlist. Cinegy Air SOLO Engine continues to play existing playlists unattended until modified by Cinegy Air SOLO Control.

Virtualization

The Cinegy Air SOLO Engine can run in a virtual machine (VM) environment VMWARE ESX , or Microsoft Hyper-V or Citrix XenServer. Running Cinegy Air SOLO Engines in a VM has many advantages such as better hardware utilization, quick deployment of additional channels (in seconds), much easier migration and inexpensive high-availability clustering. As SDI cards cannot be virtualized but may still be needed and where they cannot be replaced by RTP or UDP streams via IP, the SDI I/O is done via the Cinegy Encode which does RTP to SDI conversion and vice versa.

Multi-instance

Up to 16 instances of Cinegy Air SOLO Engine can be started on a single powerful machine transforming it into a playout server that broadcasts multiple independent channels.



Cinegy Air SOLO, active mode, single-channel playout

Supported SDI Hardware

The following SDI cards are supported:

- AJA – AJA Kona LHe Plus, AJA Kona LHi, AJA Kona Io Express, Kona 3G, Corvid 22/24
- Blackmagic Design – DeckLink series and Intensity PRO
- DVS – Atomix LT
- Deltacast – DELTA-hd series

Features Overview

- Output in SD, HD and Ultra HD (4K)
 - Run up to 16 channels in a box or virtual machine
 - Mix different codecs, resolutions and aspect ratios in one playlist
 - Stream to RTP in H.264 or MPEG-2
 - Automatically opt-in/out via SCTE 35 triggers
 - Switch to incoming SDI or RTP feeds
 - Realtime automatic up/down conversion
 - Up to 64 audio channels per playout
 - Integrated Dolby Digital decoding and encoding *
 - Automatic failover switching with Cinegy Stream Switcher *
 - Closed captions, V-Chip and AFD support
 - Static or animated logo insertion
 - Channel branding with Cinegy Type *
 - Manual CG operation with Cinegy Type Control *
 - 3rd party SDI router control with Cinegy Event Manager
 - 3rd party traffic integration with Cinegy Traffic Gateway SOLO *
- * Requires a dedicated product or license option.

Supported Codecs and File Formats

DV25/50/100	H.264
HDV	MXF OP1a
IMX30/50	MXF AS-03/11
XDCAM SD/HD/EX	Windows AVI
AVID DNxHD	QuickTime MOV
MXF MPEG-2 Long GOP	Windows Media
AVC-Intra 50/100	JPEG, PNG and BMP Images
MPEG-2 (up to 1080i 4:2:2)	